

## SERVICE INFORMATION LETTER

FROM: JetProp LLC

18 September 2006

SUBJECT: Manual Override Linkage Upgrade

TO: JetProp Owners (Jetprop Numbers 1-173)

As a part of our continued product improvement, we have recently made some minor changes to the hardware securing the Manual Override linkage. The following instructions outline the procedure for replacing the Manual Override linkage hardware.

1. Remove the top cowling.
2. On the right side of the engine just forward of the firewall locate the manual override linkage (See Drawing 560.07.200 Rev S, Sheets 6 & 7). We will be changing the hardware on each end of the linkage.
3. To gain access to the hardware connecting the manual override linkage at the bottom to the fuel control manual override arm, remove the forward baggage compartment interior and the generator access panel. You should now have easy access to the manual override linkage and the attaching hardware.
4. Replace the upper attachment hardware with an AN3-10 bolt, AN960-10 washer, MS21042-3 lock nut, and MS24665-067 cotter pin as shown in drawing 560.07.200.
5. Replace the lower attachment hardware with the 560.07.236 Screw, AN960-10 washer, MS21042-3 lock nut, and MS24665-067 cotter pin as shown in drawing 560.07.200.
6. Do an initial operational check of the manual override. Run it through the full range and make sure the new hardware does not contact the firewall or any firewall hardware. The location of the manual override motor arm can be adjusted slightly to give more clearance if needed.
7. Now install the generator access panel.
8. Do a final operational check of the manual override to make sure the new hardware doesn't contact the firewall or any firewall hardware.
9. Install the forward baggage compartment interior.
10. Install the upper cowling.
11. Make a logbook entry reflecting that JetProp Service Letter 06-560-03 has been complied with.

If there are any questions, please contact Rich Runyon in Engineering or Steve Nitchman the chief of maintenance at (509) 535-4401.

Rocket Engineering is dedicated to continuing to improve the JetProp DLX Conversion and to supporting our customers

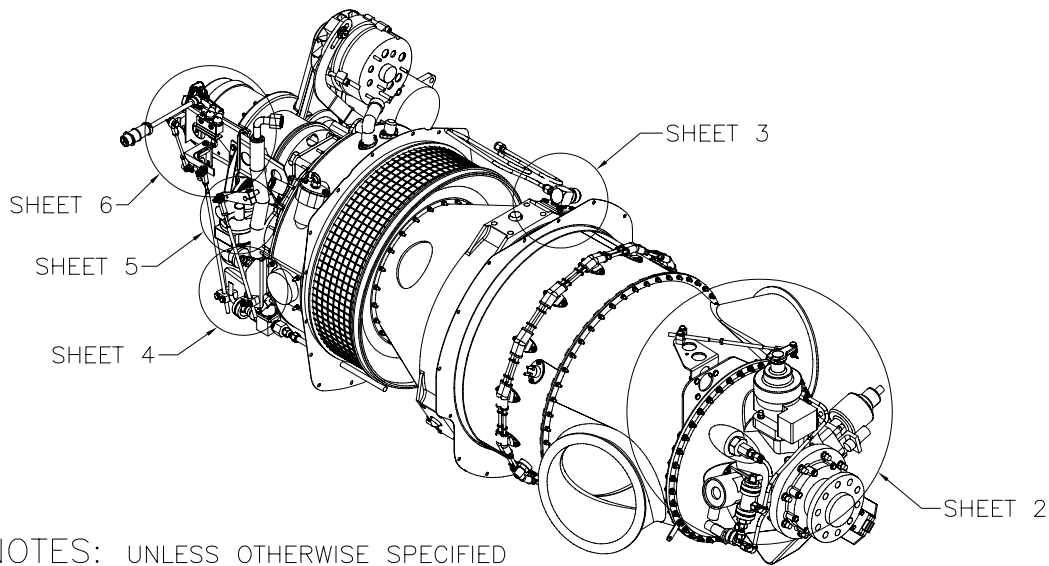
Sincerely,

A handwritten signature in black ink, appearing to read 'DC', is written over the word 'Sincerely,'.

Darwin C. Conrad  
President  
JetPROP, LLC

Attachments

Drawing 560.07.200  
Manual Override Linkage Upgrade Parts Listing



- NOTES: UNLESS OTHERWISE SPECIFIED
- USE OIL PRESSURE SWITCH FROM EXISTING MALIBU ENGINE.
  - MANUAL POWER MOUNT SUPPORT ATTACHES TO AN EXISTING POINT ON THE FUEL SYSTEM USING EXISTING HARDWARE.
  - ATTACH TO POWER LEVER ARM USING EXISTING HARDWARE ON THE ENGINE.
  - ATTACH THE CONDITION LEVER CABLE BRACKET TO THE OIL LINE ATTACHMENT POINT ON THE BOTTOM OF THE ENGINE USING THE EXISTING HARDWARE.
  - EXISTING CONDITION LEVER CABLE.
  - ATTACH TO THE RIGHT SIDE OF THE ENGINE USING THE EXISTING COVER HARDWARE.
  - EXISTING THROTTLE CABLE.
  - THROTTLE SHAFT ON THE ENGINE (COVERED WITH YELLOW CAP).
  - ATTACH USING THE HARDWARE THAT WAS HOLDING THE SHIPPING CAP ON.
  - EXISTING CONTROL CABLE ON THE AIRCRAFT.
  - PLACE THE 5 STANDOFFS ON THE ENGINE AS NEEDED.

ITEM	QTY	PART NO.	DESCRIPTION
56	1	560.07.241	6400-4-4-0 MOD
55	1	6602-4-4-4	TEE
54	1	560.07.242	TRANSDUCER FILTER FITTING ASSY
53	1	MS21919WDG10	ADEL CLAMP
52	1	50-389121-25	PRESSURE SWITCH
51	1	1103P1186	PRESSURE SWITCH
50	1	NAS1564-8-4J	FLARE REDUCER FITTING
49	1	MS28775-022	O-RING
48	2	6565-4-4	UNION
47	1	560.08.601	FITTING MODIFICATION
46	1	660526AS	SHADIN FUEL FLOW TRANSDUCER
ITEM	QTY	PART NO.	DESCRIPTION
BILL OF MATERIALS			

45	1	10376-4	4" THREADED EXTENSION
44	5	560.07.213	STANDOFF
43	1	102-00002	OIL TEMP BULB
42	1	560.07.207	EXISTING MANUAL POWER MOUNT ARM
41	1	MS21919WDG16	ADEL CLAMP
40	2	MS21919WDG15	ADEL CLAMP
39	1	560.07.217	POWER LEVER SHAFT
38	1	AE3660120E0090	TORQUE TRANSDUCER HOSE
37	2	AN3-11A	BOLT
36	3	MS21045-3	LOCK NUT
35	1	0602.1032.0075.10	SOCKET HEAD CAP SCREW
34	2	AN3-12A	BOLT
33	2	AN3-16A	BOLT
32	3	MS24665-132	COTTER PIN
31	3	AN310-3	CASTLE NUT
30	4	AN3-10	BOLT
29	1	AN526-1032R6	SCREW
28	1	560.07.236	SCREW MODIFICATION
27	2	MS24665-067	COTTER PIN
26	10	MS21042-3	MINI LOCK NUT
25	14	AN960-10L	THIN WASHER
24	22	AN960-10	WASHER
23	7	AN3-4A	BOLT
22	2	AN819-4D	SLEEVE
21	2	AN818-4D	NUT
20	1	560.07.234	AUTO IGNITION SWITCH BRACKET
19	2	560.07.219	FITTING MODIFICATION
18	1	5605-2-2-2	PIPE TEE (1/8 MMO-S)
17	1	5404-4-2	PIPE UNION (1/4 x 1/8 FF-S)
16	1	2404-4-2	PIPE TO FLARE UNION (4 FTX-S)
15	1	AE3660120E0140	TORQUE TRANSDUCER HOSE
14	1	210632	OVERSPEED GOVERNOR (OR USE A210507W)
13	1	APTE-51R-1000-68.360	TORQUE TRANSDUCER
12	2	N22A703	GENERATOR - N1 & N2
11	7	560.07.211	CABLE CLAMP TOP
10	1	560.07.232	BLEED AIR LINE
9	1	560.07.230	BLEED AIR BRACKET ASSEMBLY
8	1	560.07.202A	PROP. GOVERNOR CABLE BRACKET
7	1	560.07.209	ACTUATOR ARM 2
6	1	560.07.201	THROTTLE CABLE BRACKET
5	1	560.07.206	CONDITION LEVER CABLE BRACKET
4	1	560.07.208	POWER LEVER LINKAGE ARM
3	1	560.07.202B	PROP GOVERNOR CABLE BRACKET
2	1	560.07.212	MANUAL OVERRIDE LINKAGE
1	1	560.07.210	MANUAL POWER MOUNT ASSEMBLY
ITEM	QTY	PART NO.	DESCRIPTION
BILL OF MATERIALS			
P/N	NEXT ASSY.	USED ON	QTY.

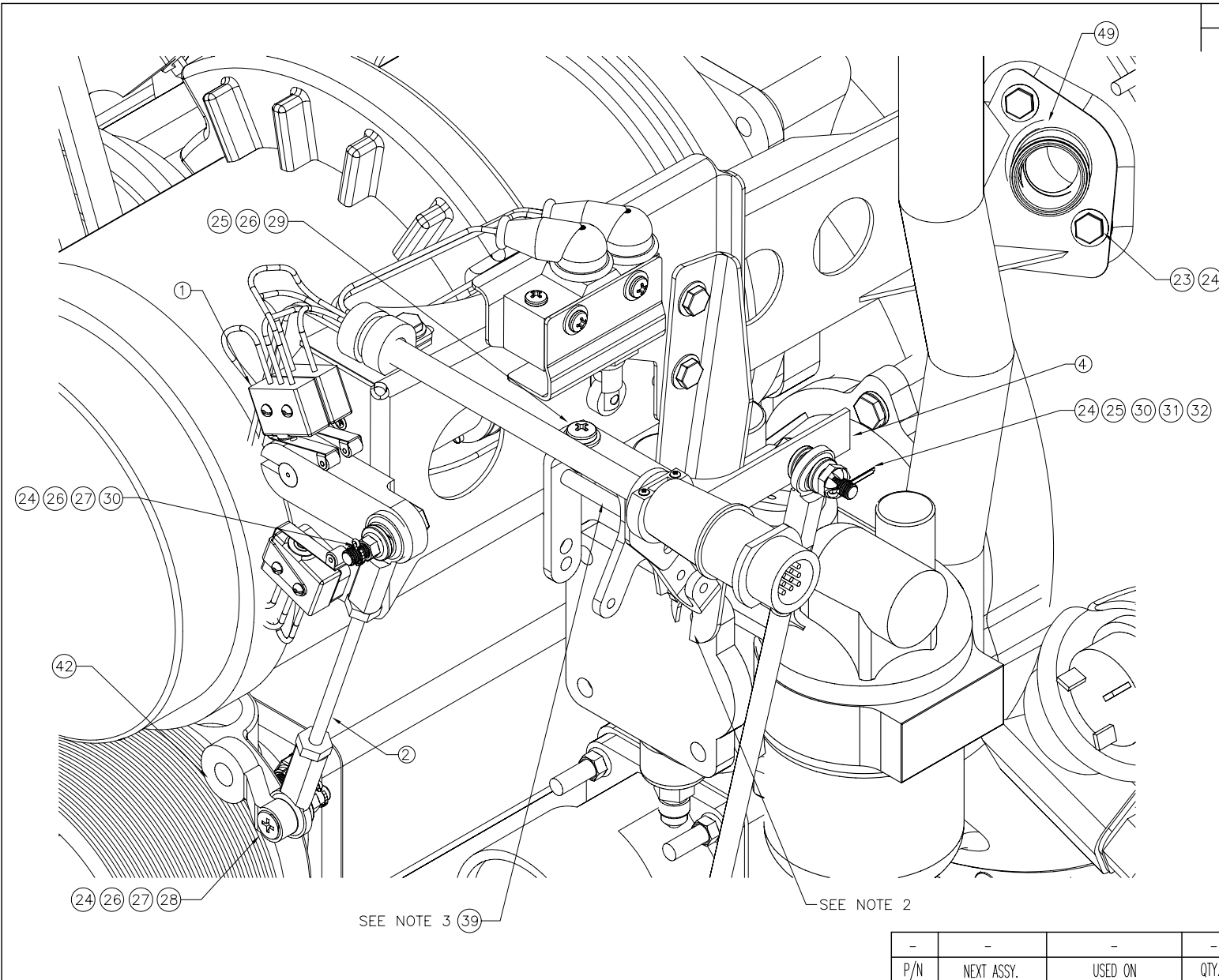
### REVISION DESCRIPTION

- △ CHANGED TO DRAWING
- △ CHANGED LOCATIONS OF PARTS
- △ ADDED OIL TEMP BULB.
- △ CHANGED OVERSPEED GOVERNOR.
- △ CHANGED PART NUMBER
- △ ADDED SHADIN TRANSDUCER.
- △ ADDED MANUAL POWER GASKET.
- △ CHANGED PRESSURE SWITCH USED.
- △ CHANGED FITTINGS USED.
- △ CORRECTED OVERSPEED GOV PART #.
- △ CHANGED TO NEWEST CONFIG.
- △ ADDED PART TO B.O.M
- △ CORRECTED A PART CALLOUT.
- △ CHANGED FITTING IN B.O.M.
- △ CHANGED TO SHOW OIL BREATHER TUBE.
- △ CORRECTED HARDWARE ORIENTATION.
- △ CHANGED PARTS IN B.O.M.
- △ ADDED TRANSDUCER FILTER.
- △ UPDATED PART NUMBERS IN B.O.M.

SCALE:	SIZE:	REVISION				
NTS	B	FOR DESCRIPTION OF CHANGE - SEE ABOVE				
UNLESS OTHERWISE SPECIFIED		LTR	ECO#	BY	DATE	CHK
ALL DIMENSIONS ARE IN INCHES		A	640	RD	1/99	
TOLERANCES:		B	698	RD	2/99	
.X ±.10 .XX ±.030		C	796	RD	4/99	
.XXX ±.010 ±.1"		D	974	RD	11/99	
REMOVE BURRS AND SHARP EDGES		E	1026	JW	2/00	
		F	1289	RD	3/01	
		G	1334	RD	5/01	
		H	1524	RD	6/02	
		I	1675	RD	9/02	
		J	2079	RD	4/03	
		K	2378	RD	10/03	
		L	3092	RB	11/04	
		M	3231	RB	3/05	
		N	3283	RB	4/05	
		O	3695	RB	9/05	
		P	3874	RD	12/05	
		Q	3942	RB	2/06	
		R	4067	RD	4/06	
		S	4362	RD	8/06	
DRAWN	BY	DATE				
CHECKED	K. SOGGE	5/98				
APPR'D						
FAA APPL						

**ROCKET ENGINEERING CORPORATION**

PROJECT:	JetPROP DLX 
DRAWING TITLE:	ACCESSORIES CONTROLS & EQUIPMENT INSTALL
SHEET 1 OF 7	DRAWING NUMBER: 560.07.200 REV. S



REVISION DESCRIPTION

- △ CHANGED TO DRAWING
- △ CHANGED LOCATIONS OF PARTS
- △ ADDED OIL TEMP BULB.
- △ CHANGED OVERSPEED GOVERNOR.
- △ CHANGED PART NUMBER
- △ ADDED SHADIN TRANSDUCER.
- △ ADDED MANUAL POWER GASKET.
- △ CHANGED PRESSURE SWITCH USED.
- △ CHANGED FITTINGS USED.
- △ CORRECTED OVERSPEED GOV PART #.
- △ CHANGED TO NEWEST CONFIG.
- △ ADDED PART TO B.O.M.
- △ CORRECTED A PART CALLOUT.
- △ CHANGED FITTING IN B.O.M.
- △ CHANGED TO SHOW OIL BREATHER TUBE.
- △ CORRECTED HARDWARE ORIENTATION.
- △ CHANGED PARTS IN B.O.M.
- △ ADDED TRANSDUCER FILTER.
- △ UPDATED PART NUMBERS IN B.O.M.

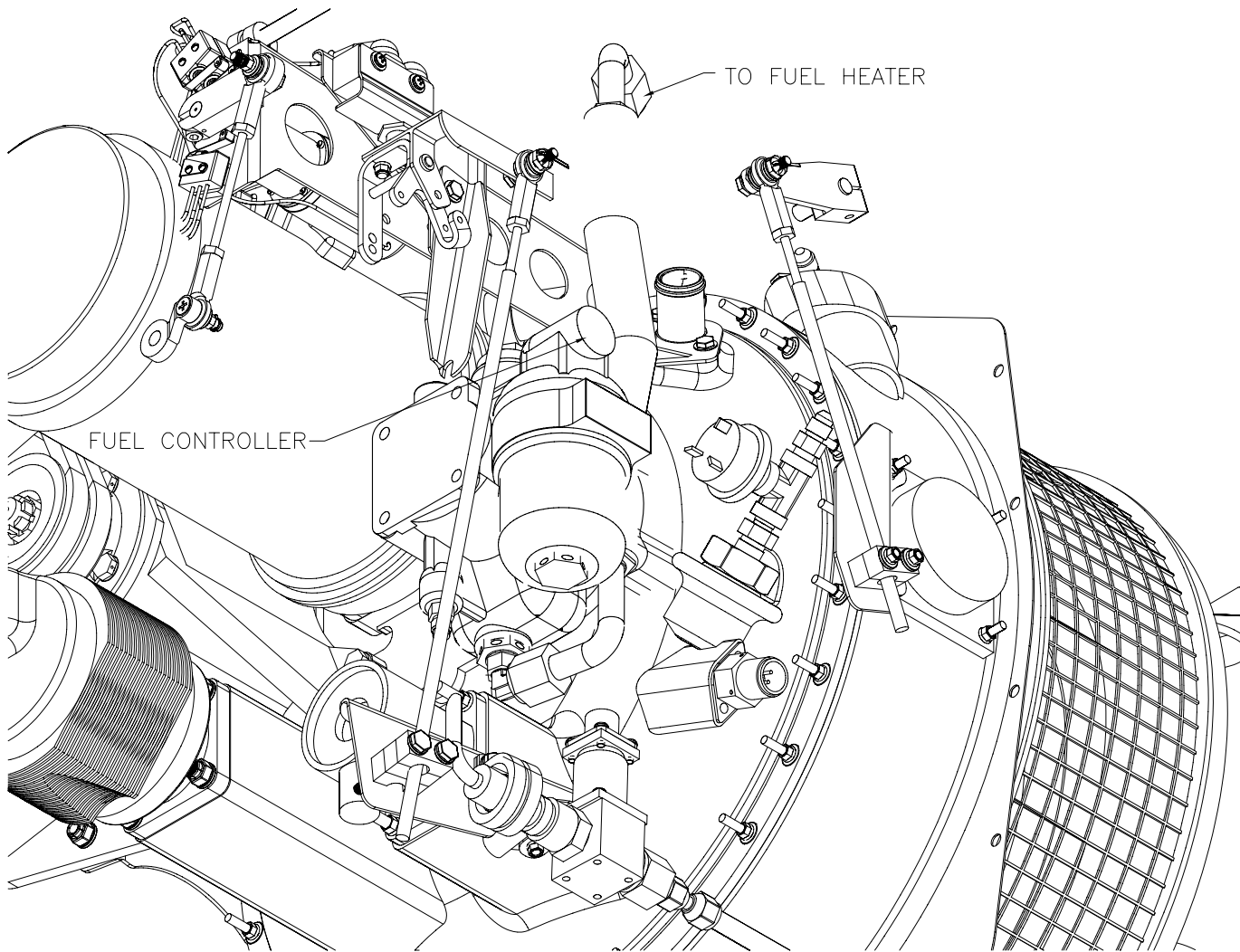
SCALE:	NTS	SIZE:	B	REVISION				
				FOR DESCRIPTION OF CHANGE - SEE ABOVE				
				LTR	ECO#	BY	DATE	CHK
UNLESS OTHERWISE SPECIFIED ALL DIMENSIONS ARE IN INCHES  TOLERANCES: .X ±.10 .XX ±.030 .XXX ±.010 ∓ ±1"  REMOVE BURRS AND SHARP EDGES				A	640	RD	1/99	
				B	698	RD	2/99	
				C	796	RD	4/99	
				D	974	RD	11/99	
				E	1026	JW	2/00	
				F	1289	RD	3/01	
				G	1334	RD	5/01	
				H	1524	RD	6/02	
				I	1675	RD	9/02	
				J	2079	RD	4/03	
				K	2378	RD	10/03	
				L	3092	RB	11/04	
				M	3231	RB	3/05	
				N	3283	RB	4/05	
	BY	DATE						
DRAWN	K. SOGGE	5/98	P	3874	RD	12/05		
CHECKED			Q	3942	RB	2/06		
APPRV'D			R	4067	RD	4/06		
FAA APPL			S	4362	RD	8/06		

**ROCKET ENGINEERING CORPORATION**

PROJECT: **JetPROP DLX**

DRAWING TITLE:			
ACCESSORIES CONTROLS & EQUIPMENT INSTALL			
SHEET	DRAWING NUMBER:	REV.	
6 OF 7	560.07.200	S	

-	-	-	-
P/N	NEXT ASSY.	USED ON	QTY.



REVISION DESCRIPTION

- △ CHANGED TO DRAWING
- △ CHANGED LOCATIONS OF PARTS
- △ ADDED OIL TEMP BULB.
- △ CHANGED OVERSPEED GOVERNOR.
- △ CHANGED PART NUMBER
- △ ADDED SHADIN TRANSDUCER.
- △ ADDED MANUAL POWER GASKET.
- △ CHANGED PRESSURE SWITCH USED.
- △ CHANGED FITTINGS USED.
- △ CORRECTED OVERSPEED GOV PART #.
- △ CHANGED TO NEWEST CONFIG.
- △ ADDED PART TO B.O.M
- △ CORRECTED A PART CALLOUT.
- △ CHANGED FITTING IN B.O.M.
- △ CHANGED TO SHOW OIL BREATHER TUBE.
- △ CORRECTED HARDWARE ORIENTATION.
- △ CHANGED PARTS IN B.O.M.
- △ ADDED TRANSDUCER FILTER.
- △ UPDATED PART NUMBERS IN B.O.M.

SCALE:	SIZE:	REVISION					
NTS	B	FOR DESCRIPTION OF CHANGE - SEE ABOVE.					
		LTR	ECO#	BY	DATE	CHK	
UNLESS OTHERWISE SPECIFIED ALL DIMENSIONS ARE IN INCHES  TOLERANCES: .X ±.10 .XX ±.030 .XXX ±.010 ∓ ±1'  REMOVE BURRS AND SHARP EDGES		A	640	RD	1/99		
		B	698	RD	2/99		
		C	796	RD	4/99		
		D	974	RD	11/99		
		E	1026	JW	2/00		
		F	1289	RD	3/01		
		G	1334	RD	5/01		
		H	1524	RD	6/02		
		I	1675	RD	9/02		
		J	2079	RD	4/03		
		K	2378	RD	10/03		
		L	3092	RB	11/04		
		M	3231	RB	3/05		
		N	3283	RB	4/05		
				O	3695	RB	9/05
		DRAWN	BY	DATE	P	3874	RD
CHECKED			Q	3942	RB	2/06	
APPRV'D			R	4067	RD	4/06	
FAA APPL			S	4362	RD	8/06	

**ROCKET ENGINEERING CORPORATION**

PROJECT: **JetPROP DLX**

DRAWING TITLE: ACCESSORIES CONTROLS & EQUIPMENT INSTALL

-	-	-	-
P/N	NEXT ASSY.	USED ON	QTY.
7 OF 7	DRAWING NUMBER:	560.07.200	REV. S

**Manual Override Linkage Upgrade Parts Listing**

<b>Quantity</b>	<b>Part Number</b>	<b>Description</b>
1	560.07.236	Screw Modification
1	AN3-10	Bolt
2	MS21042-3	Mini Lock Nut
2	AN960-10	Washer
2	MS24665-067	Cotter Pin