

S.I.L. NO. 06-560-01

SERVICE INFORMATION LETTER

FROM: JetProp LLC

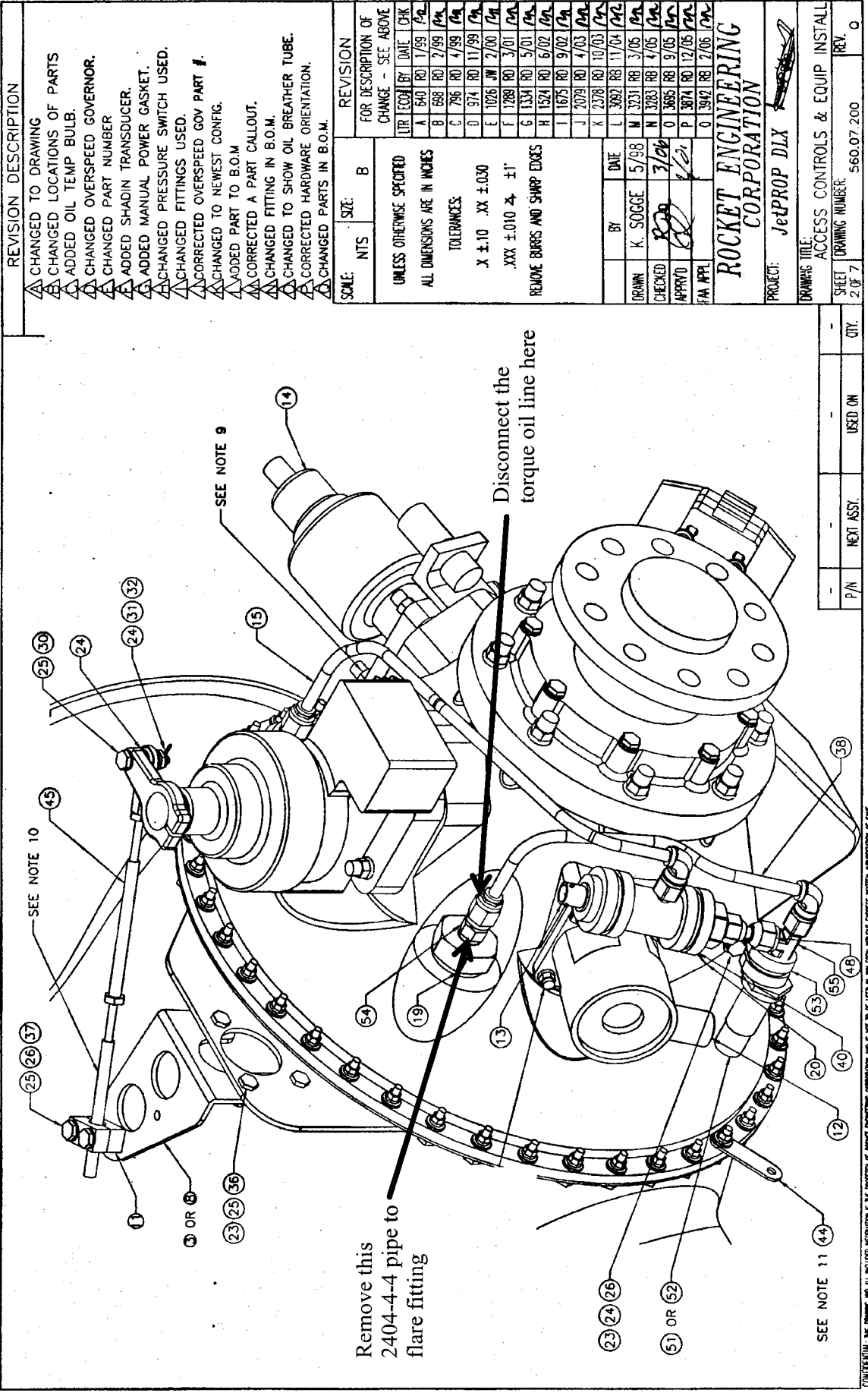
8 May 2006

SUBJECT: Torque Transducer Filter

Applicability: JetProp #1 to JetProp #176.

A few JetProps have experienced torque indicating problems found to be caused by contaminants in the torque transducer. To help prevent this problem JetProp LLC has developed a filter designed to filter out contaminants in the oil just prior to the torque transducer. This new filter can be easily installed as discussed below.

1. Remove the top cowling.
2. On the front right side of the engine locate the torque transducer and the oil line running to bottom of the torque transducer. Disconnect the oil line at the engine as shown in Drawing 560.07.200 Rev Q.
3. Remove the 2404-4-4 pipe to flare fitting from the large fitting installed in the engine. (See Drawing 560.07.200 Rev Q.)
4. Replace the fitting removed in step 3 above with a straight reducer 5405-04-04 and the Transducer Filter Fitting (560.07.237). See Drawing 560.07.200 Rev R.
5. Reconnect the oil line disconnected in step 2 above to the Transducer Filter Fitting installed in step 4. See Drawing 560.07.200 Rev R.
6. Perform a ground run of the engine to verify there are no oil leaks and that the torque transducer functions properly.
7. Reinstall the top cowling.
8. Make a logbook entry reflecting that JetProp Service Letter 06-560-01 has been complied with.



REVISION DESCRIPTION

- △ CHANGED TO DRAWING
- △ CHANGED LOCATIONS OF PARTS
- △ ADDED OIL TEMP BULB
- △ CHANGED OVERSPEED GOVERNOR.
- △ CHANGED PART NUMBER
- △ ADDED SHADIN TRANSDUCER.
- △ ADDED MANUAL POWER GASKET.
- △ CHANGED PRESSURE SWITCH USED.
- △ CHANGED FITTINGS USED.
- △ CORRECTED OVERSPEED GOV PART #.
- △ CHANGED TO NEWEST CONFIG.
- △ ADDED PART TO B.O.M
- △ CORRECTED A PART CALLOUT.
- △ CHANGED FITTING IN B.O.M.
- △ CHANGED TO SHOW OIL BREATHER TUBE.
- △ CORRECTED HARDWARE ORIENTATION.
- △ CHANGED PARTS IN B.O.M.

SCALE:	NTS:	SIZE:	B:	REVISION FOR DESCRIPTION OF CHANGE - SEE ABOVE
				UNLESS OTHERWISE SPECIFIED
				ALL DIMENSIONS ARE IN INCHES
				TOLERANCES:
				X ± .10 .XX ± .030
				.XXX ± .010 ± .1'
				REMOVE BURRS AND SHARP EDGES

BY	DATE
K. SOGGE	5/98
	3/00
	4/21

DRAWN	DATE
K. SOGGE	5/98
	3/05
	4/05
	9/05
	12/05
	2/06
	7/06

ROCKET ENGINEERING CORPORATION

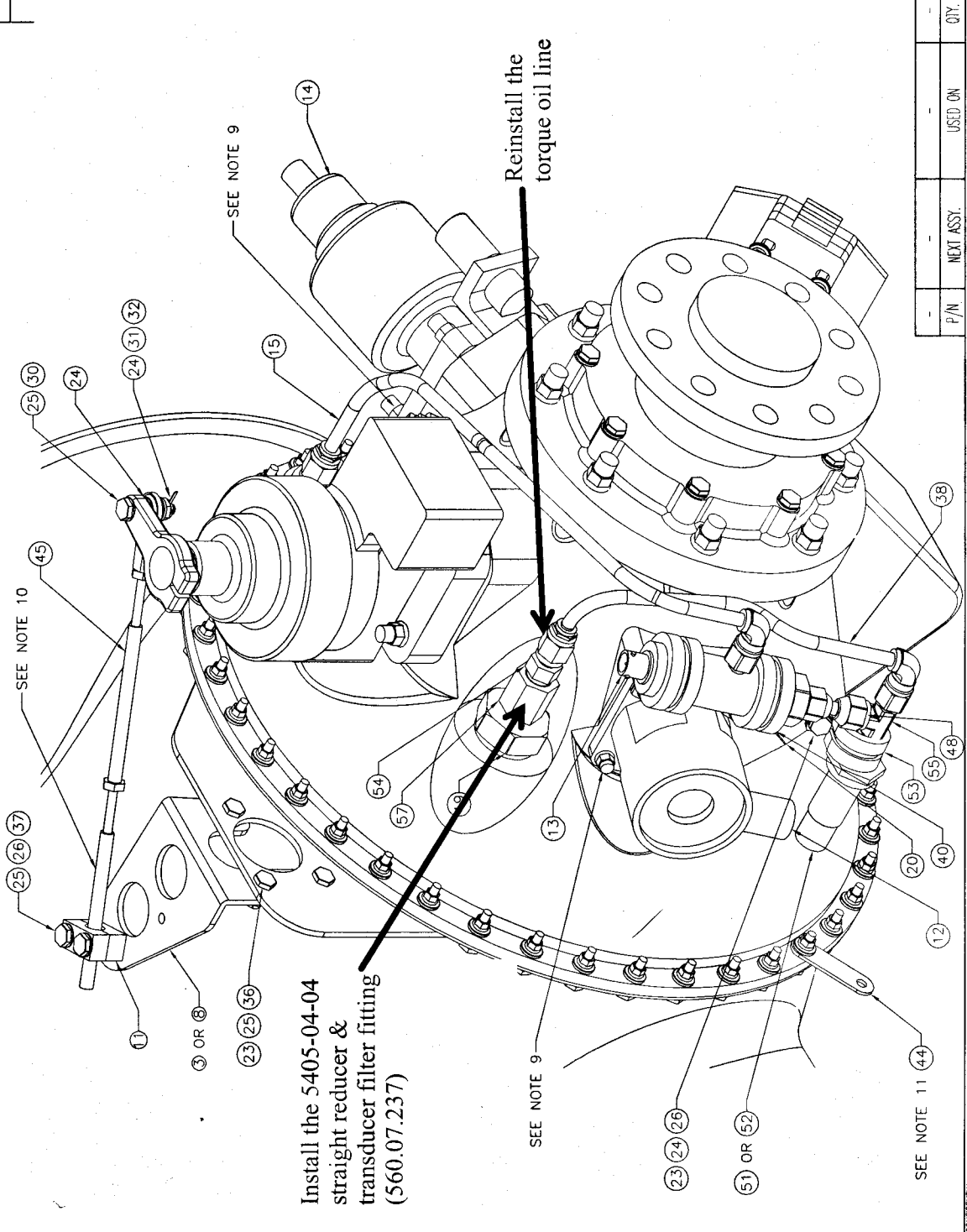
PROJECT: **JetPROP DLX**

DRAWING TITLE:	ACCESS CONTROLS & EQUIP INSTALL
SHEET	560.07.200
2 OF 7	REV. 0

P/N	NEXT ASSY.	USED ON	QTY.
-	-	-	-

CONFIDENTIAL: THIS DRAWING AND ALL INCLUDED INFORMATION IS THE PROPERTY OF ROCKET ENGINEERING CORPORATION AND IS NOT TO BE USED IN ANY FORM WITHOUT EXPRESS WRITTEN AUTHORIZATION OF SAME.

REVISION DESCRIPTION		SCALE:	SIZE:	B	REVISION
CHANGED TO DRAWING CHANGED LOCATIONS OF PARTS CHANGED OIL TEMP. BULB. CHANGED OVERSPEED GOVERNOR. CHANGED PART NUMBER ADDED SHADIN TRANSDUCER. ADDED MANUAL POWER GASKET. CHANGED PRESSURE SWITCH USED. CHANGED FITTINGS USED. CORRECTED OVERSPEED GOV. PART #. CHANGED TO NEWEST CONFIG. ADDED PART TO B.O.M. CORRECTED A PART CALLOUT. CHANGED FITTING IN B.O.M. CHANGED TO SHOW OIL BREATHER TUBE. CORRECTED HARDWARE ORIENTATION. CHANGED PARTS IN B.O.M. ADDED TRANSDUCER FILTER.					FOR DESCRIPTION OF CHANGE - SEE ABOVE
DATE	BY	DATE	CHK		
A	640	RD	1/99		
B	698	RD	2/99		
C	795	RD	4/99		
D	974	RD	11/99		
E	1026	DM	2/00		
F	1289	RD	3/01		
G	1334	RD	5/01		
H	1524	RD	6/02		
I	1675	RD	9/02		
J	2079	RD	4/03		
K	2378	RD	10/03		
L	3092	RB	11/04		
M	3231	RB	3/05		
N	3283	RB	4/05		
O	3695	RB	9/05		
P	3874	RD	12/05		
Q	3942	RB	2/06		
R	4667	RD	4/06		
UNLESS OTHERWISE SPECIFIED					
ALL DIMENSIONS ARE IN INCHES					
TOLERANCES:					
X ± .10 XX ± .030					
.XXX ± .010 \pm .1"					
REMOVE BURRS AND SHARP EDGES					
BY	DATE				
K. SOGGE	5/98				
CHECKED					
APPROV'D					
FAA APPL					
ROCKET ENGINEERING CORPORATION					
PROJECT: JetPROP DLX					
DRAWING TITLE: ACCESSORIES, CONTROLS & EQUIPMENT INSTALL					
SHEET 2 OF 7					
DRAWING NUMBER: 560.07.200					
REV R					



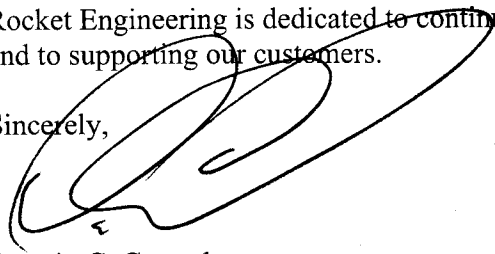
P/N	NEXT ASSY.	USED ON	QTY.
-	-	-	-

CONFIDENTIAL: THIS DRAWING AND ALL INCLUDED INFORMATION IS THE PROPERTY OF ROCKET ENGINEERING CORPORATION AND IS NOT TO BE USED IN ANY FORM WITHOUT EXPRESS WRITTEN AUTHORIZATION OF SAME.

If there are any questions, please contact Rich Runyon in Engineering or Steve Nitchman the chief of maintenance at (509) 535-4401.

Rocket Engineering is dedicated to continuing to improve the JetProp DLX Conversion and to supporting our customers.

Sincerely,

A handwritten signature in black ink, appearing to be 'D. Conrad', written over the word 'Sincerely,'.

Darwin C. Conrad
President
JetPROP, LLC